

Lake Villa District Library Phase II

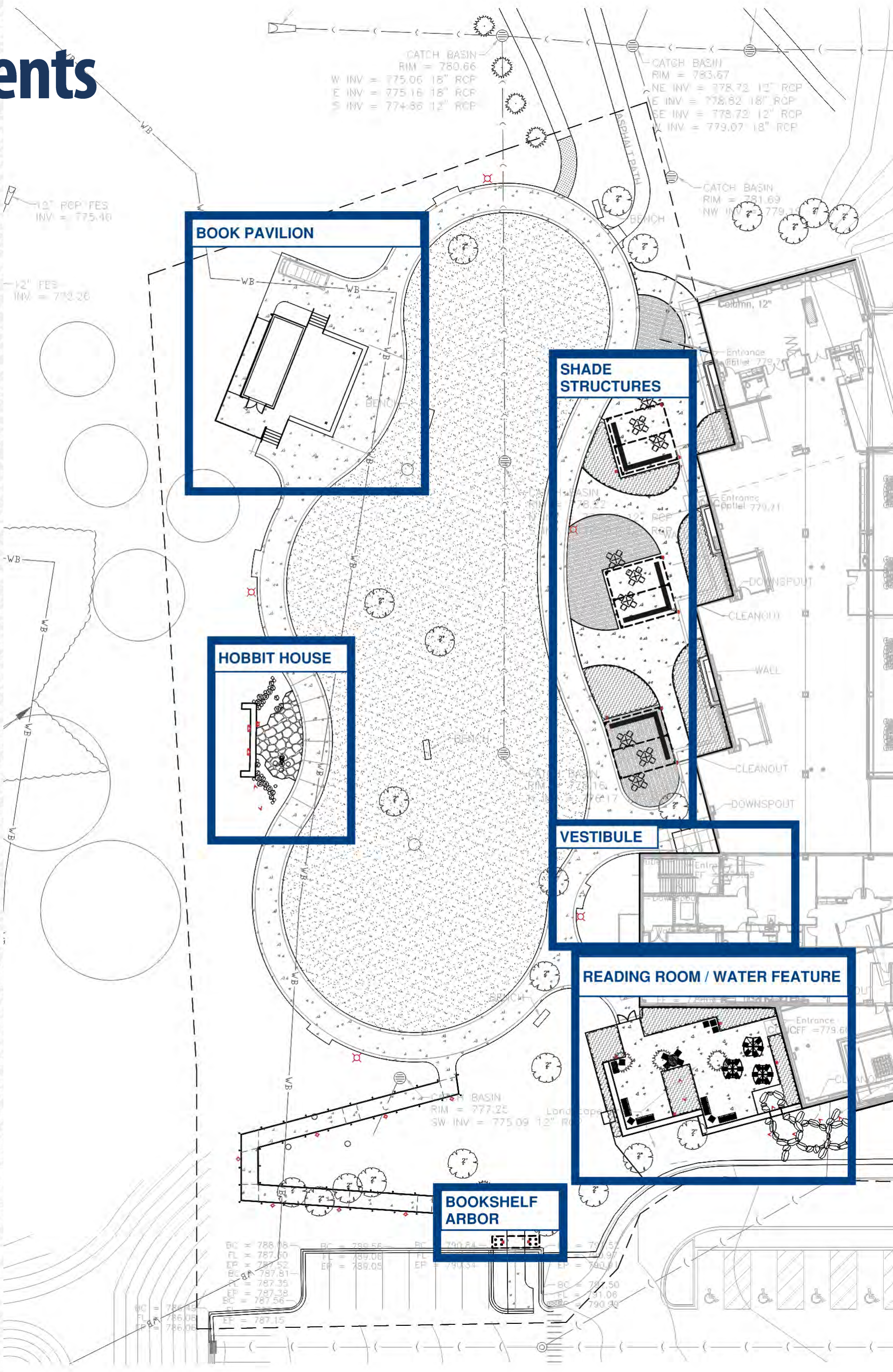
50% Design Package & Construction Documents



Hey and Associates, Inc.



Enlargements



Master Plan Enlargement



Hobbit House



Reference Images



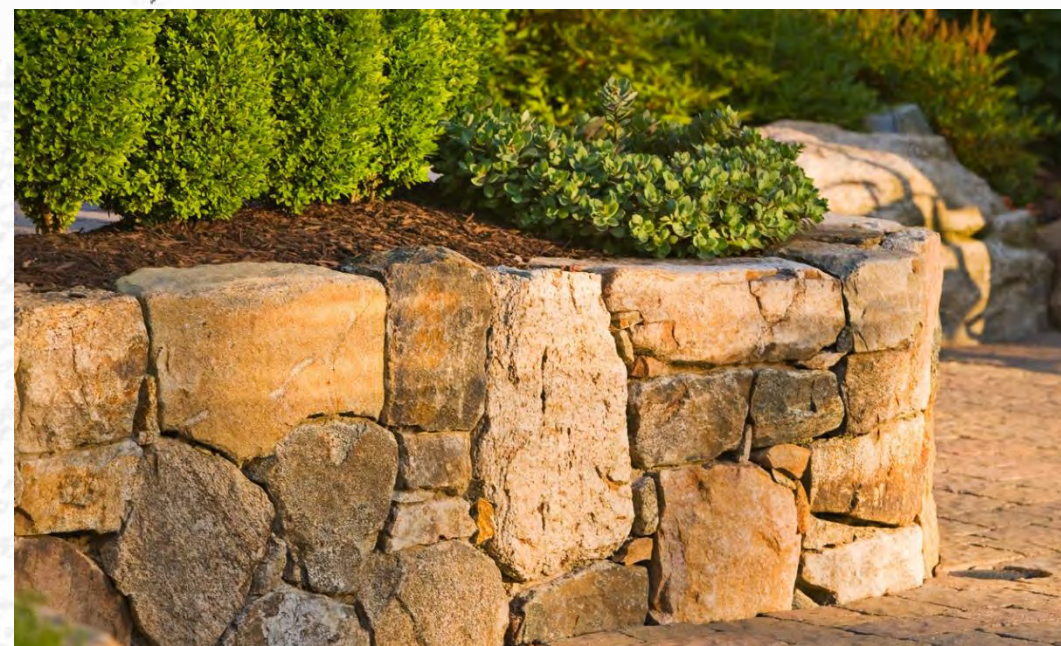
Log Game Table



Flagstone/cobble Paving



Stone Retaining Wall

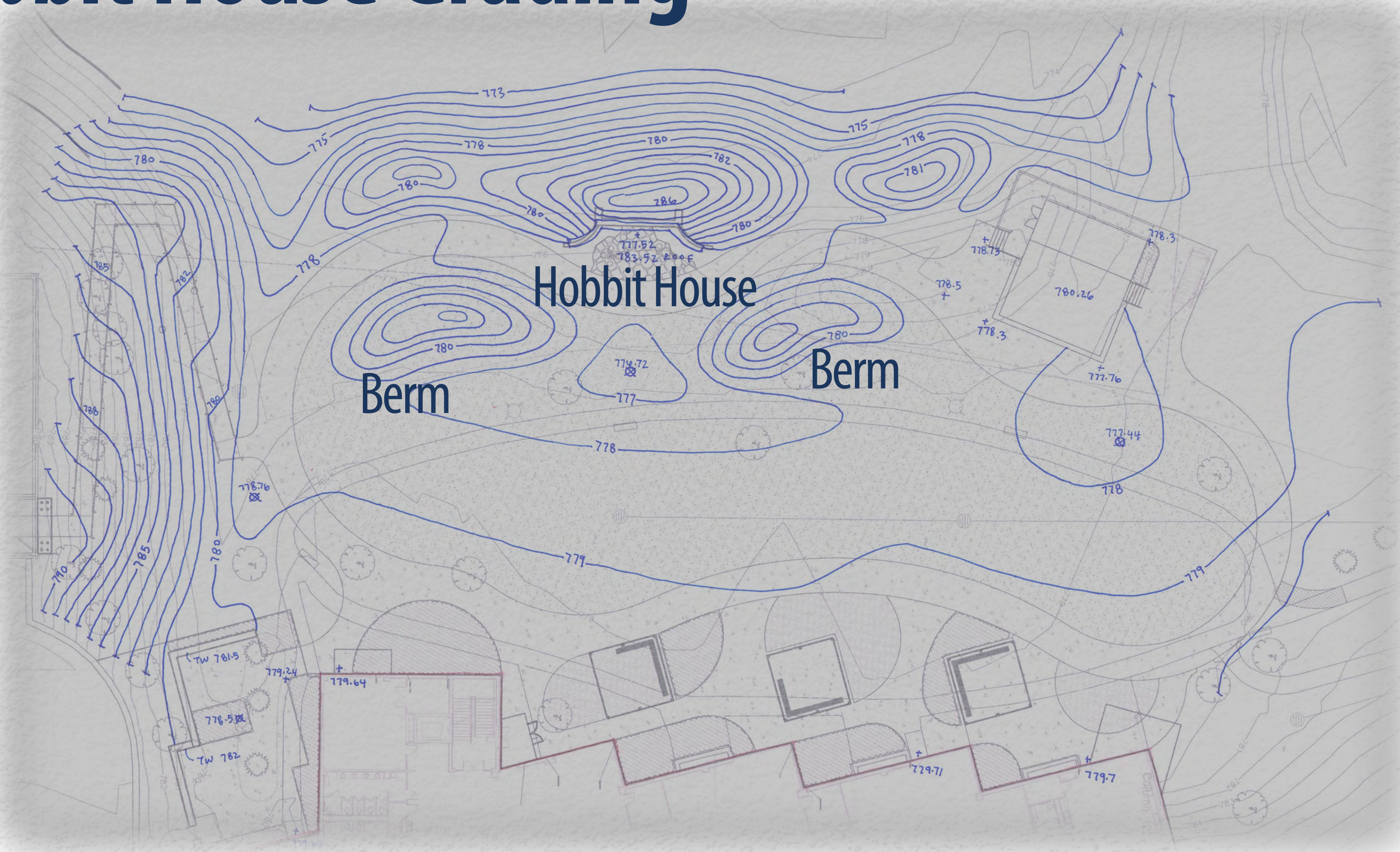


Garden Lighting



- Heavy timber wood
- Rustic brick
- Tumbled stone veneer
- Stucco reveals
- Backlit faux windows
- Chimney

Hobbit House Grading



Shade Structures Furniture



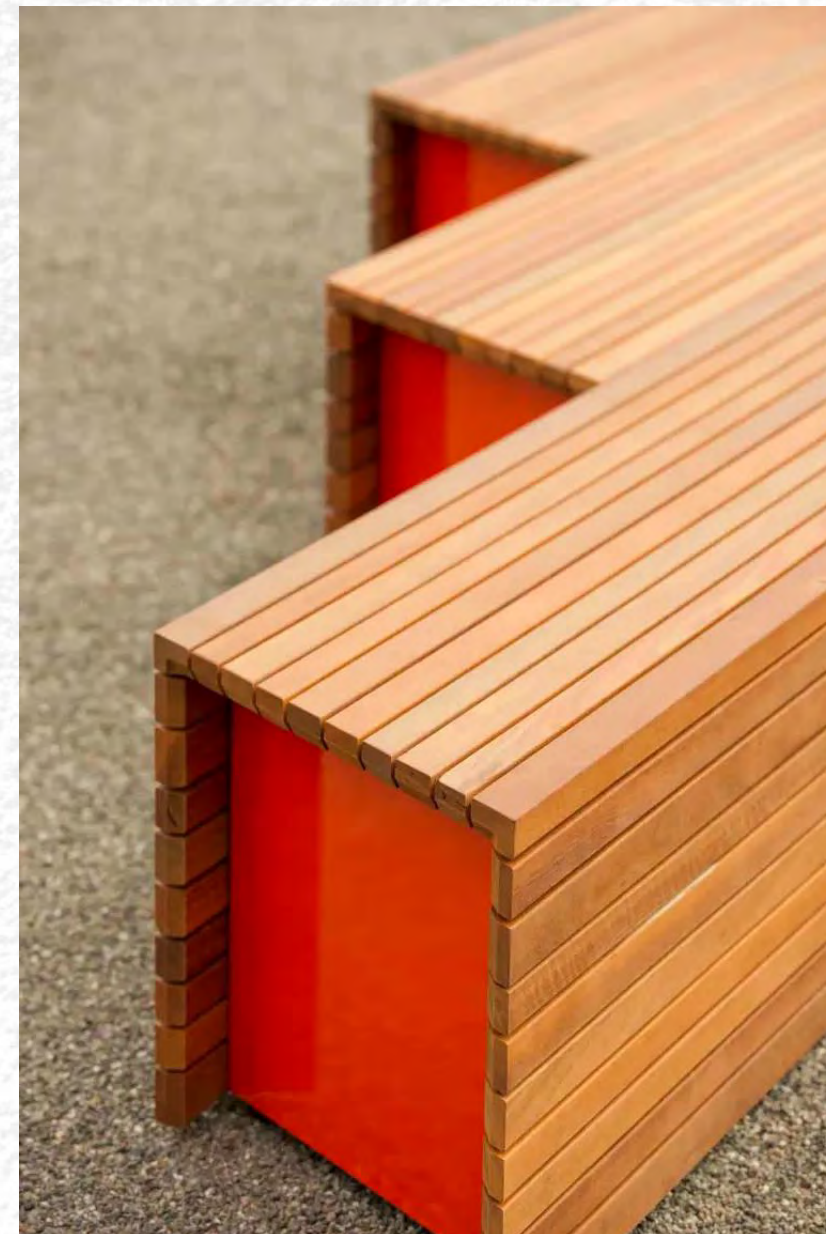
Chipman Table and Chairs



Apex Table and Benches



Parallel 42 (weathered)



Parallel 42



Shade Structures



**Option 1
Tables & Chairs
Chipman**

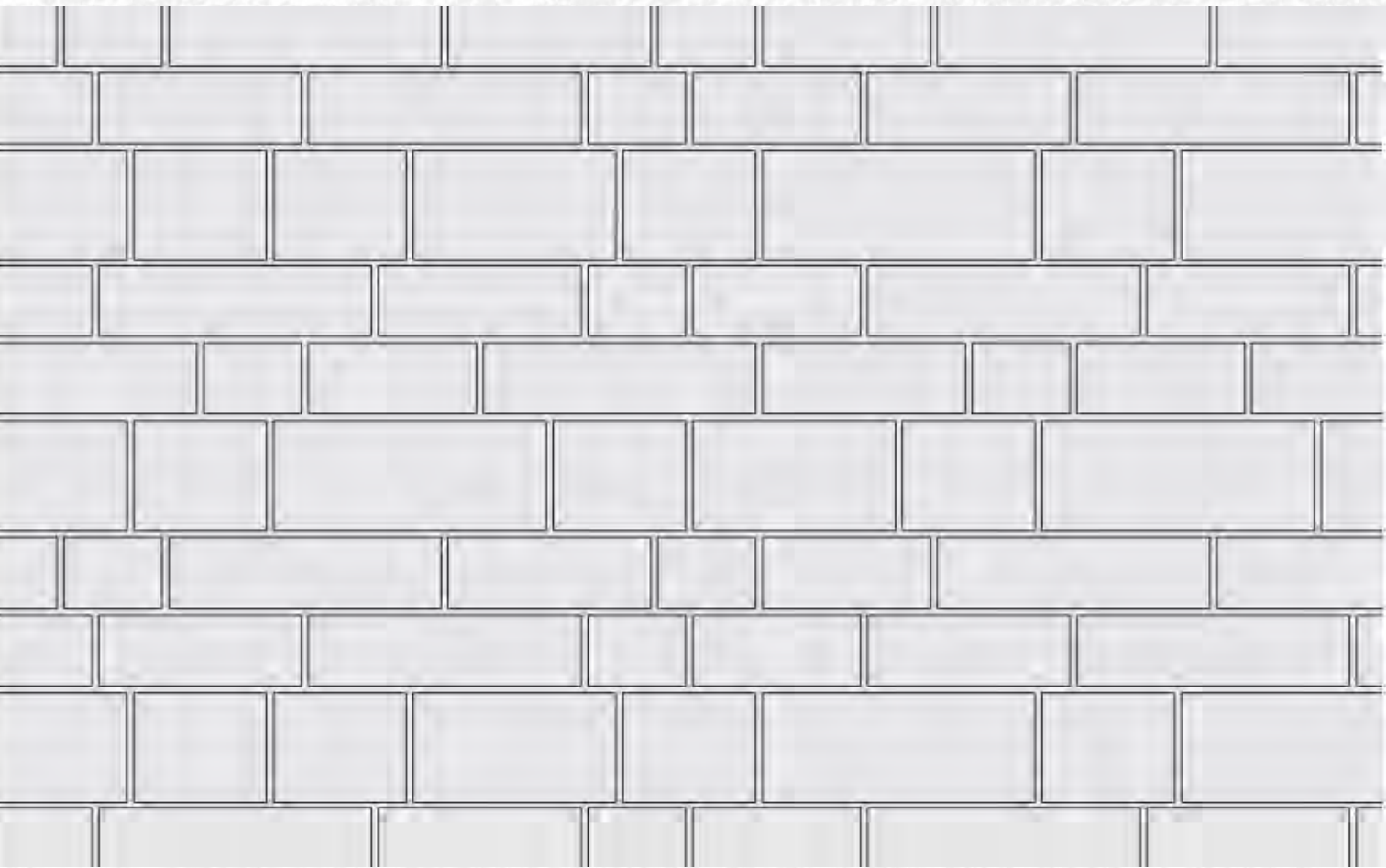
Shade Structures



**Option 2
Tables & Chairs
Apex**

Pavers at Shade Structures – Option 1

Unilock – Artline



Pattern

RANDOM BUNDLE	
	UNIT A 125mm x 169mm x 70mm 4 7/8" x 6 3/4" x 2 3/4"
	UNIT B 125mm x 262.5mm x 70mm 4 7/8" x 10 3/8" x 2 3/4"
	UNIT C 125mm x 337.5mm x 70mm 4 7/8" x 13 3/8" x 2 3/4"
	UNIT D 125mm x 450mm x 70mm 4 7/8" x 17 3/4" x 2 3/4"
	UNIT E 187.5mm x 225mm x 70mm 7 1/2" x 8 7/8" x 2 3/4"
	UNIT F 187.5mm x 337.5mm x 70mm 7 1/2" x 13 3/8" x 2 3/4"
	UNIT G 187.5mm x 450mm x 70mm 7 1/2" x 17 3/4" x 2 3/4"

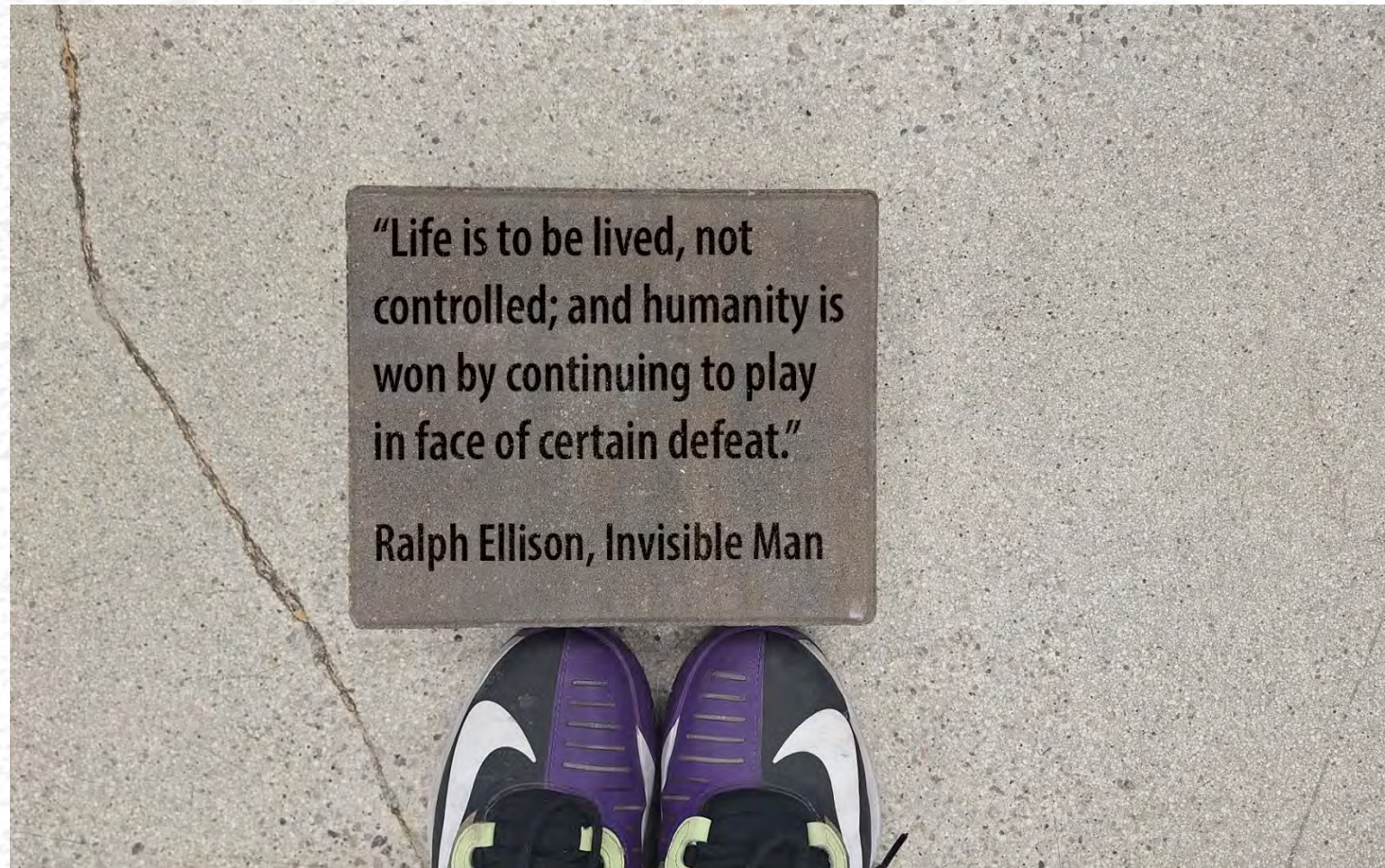
Engraved Pavers



4 7/8" width



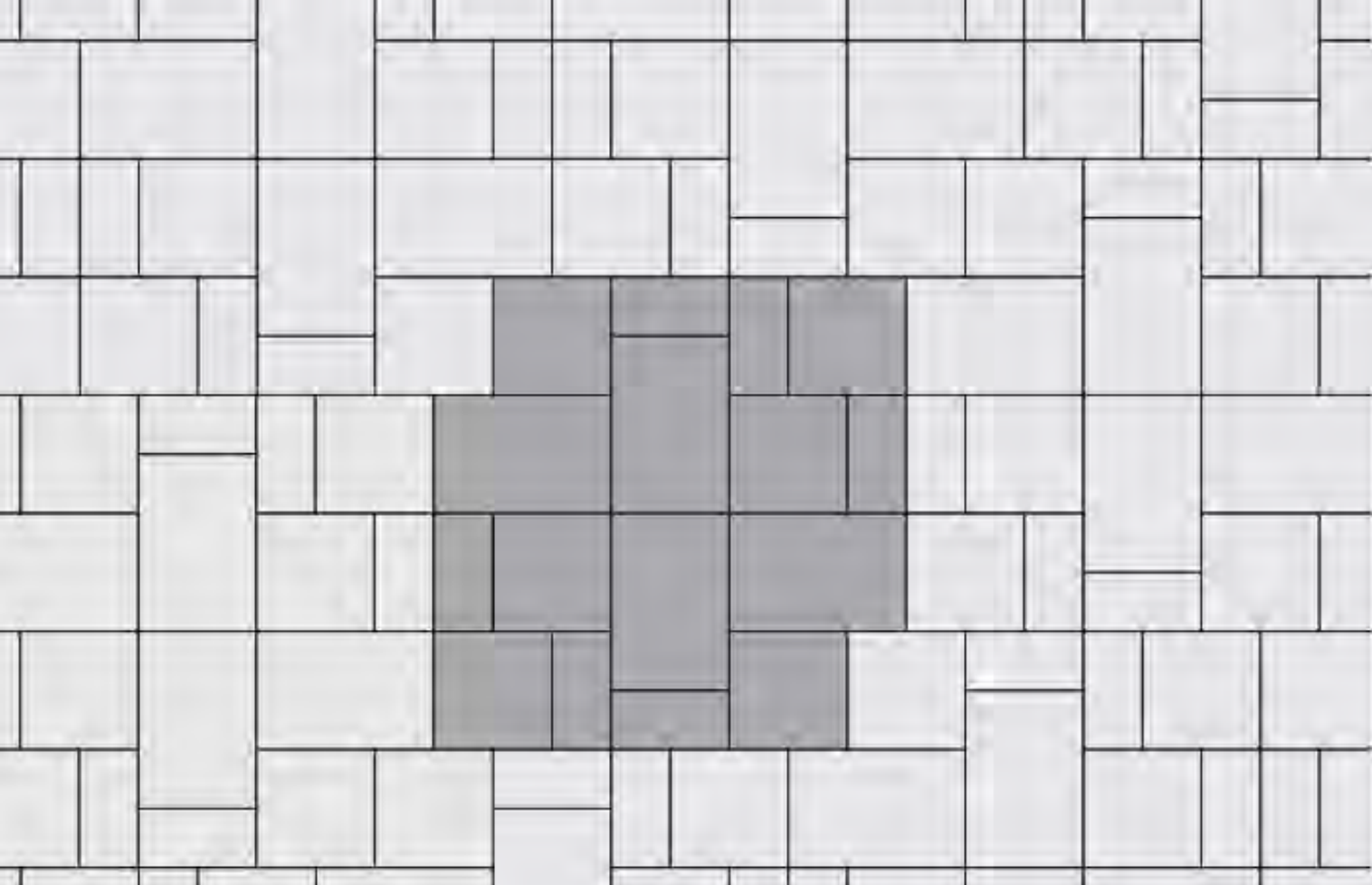
Bavarian Mix Color



7 1/2" width

Pavers at Shade Structures – Option 2

Unilock – Beacon Hill



Pattern



Bavarian Mix Color

RANDOM BUNDLE



LARGE RECTANGLE
380mm x 570mm x 60mm
15" x 22 1/2" x 2 3/8"



SMALL RECTANGLE
190mm x 380mm x 60mm
7 1/2" x 15" x 2 3/8"



SQUARE
380mm x 380mm x 60mm
15" x 15" x 2 3/8"



Driveway



Patio & Walkway



Reading Room



Reading Room Water Feature Equipment



12" to 18" falls, water 6" deep in pools



SS 400 Pond Skimmer (& pump house)



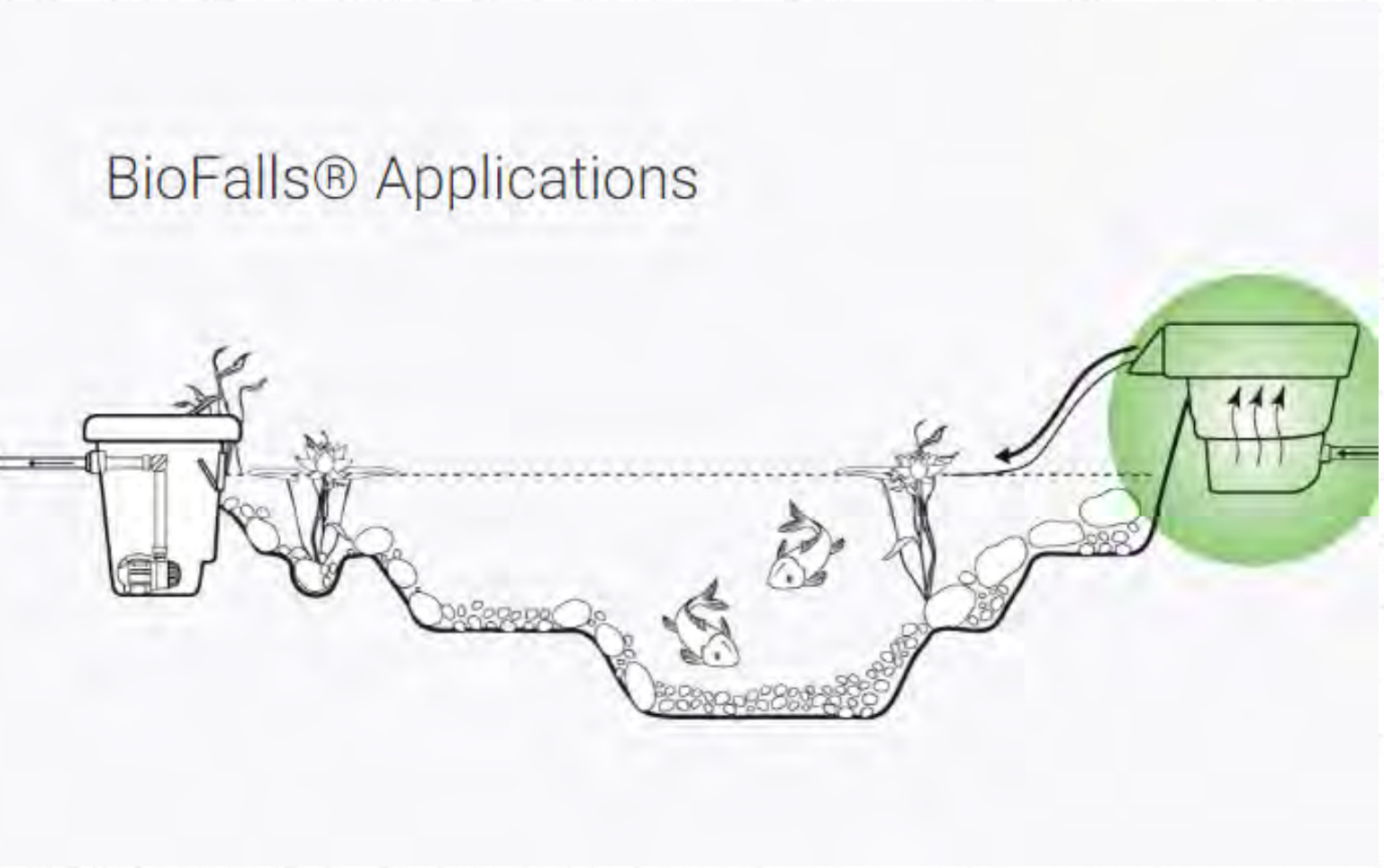
Aqua Surge 2000-4000 adjustable pump



Low-voltage lighting for waterfalls, trees



Installed skimmer in use



Water pumped from skimmer to falls

Reading Room Site Furnishings



Wellspring teak 8' bench



Wellspring teak chair & side table



Legrand GFI/USB power/charging bollard



Wellspring teak table



Carousel 5- & 6-person metal tables



Shade metal umbrella

Reading Room Site Furnishings



6' Montage ornamental fence & gates

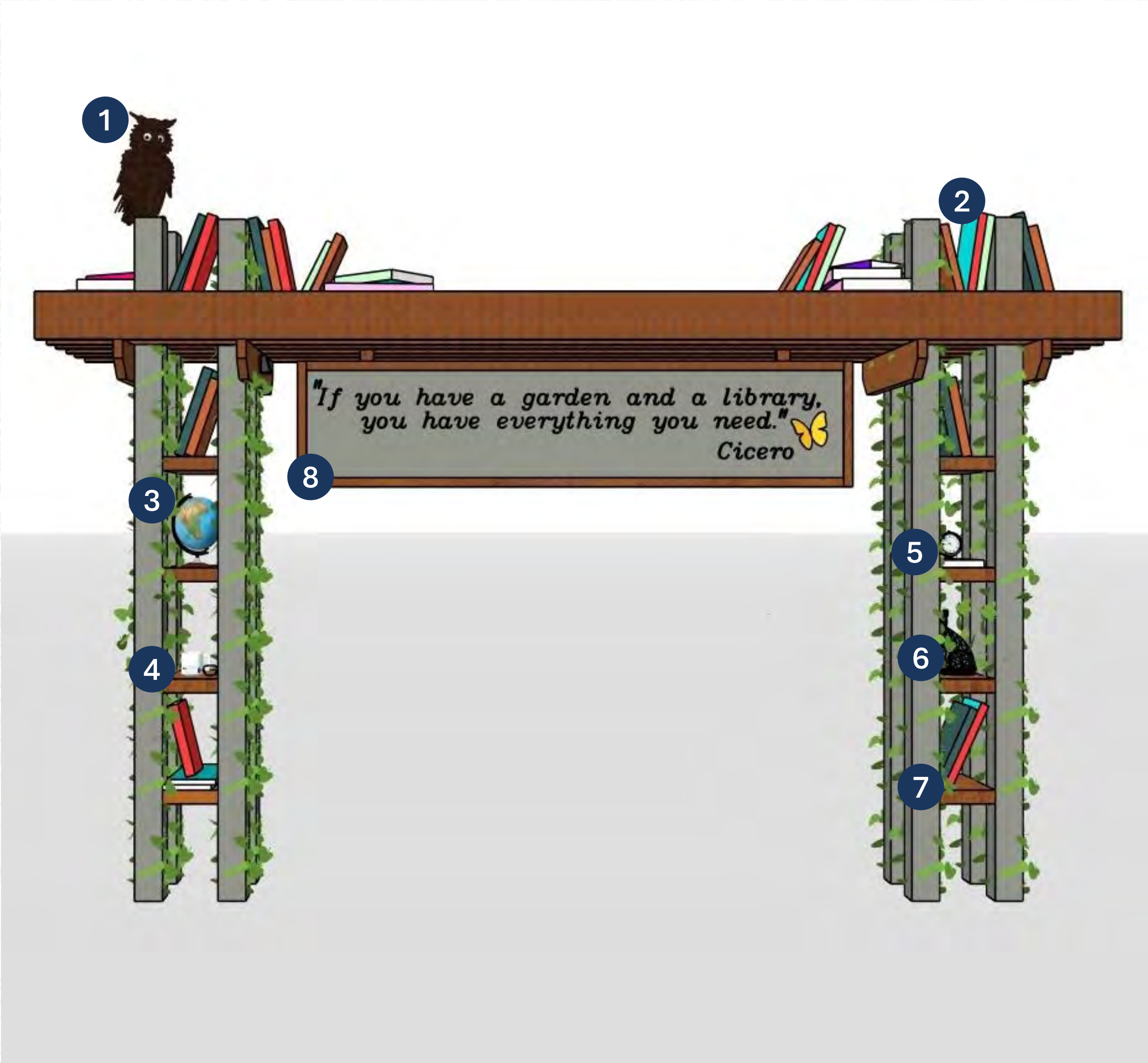


Integral colored scored concrete paving



Stone veneer, precast coping seatwall

Entry Arbor



Aluminum in woodgrain colors



STANDARD COLORS

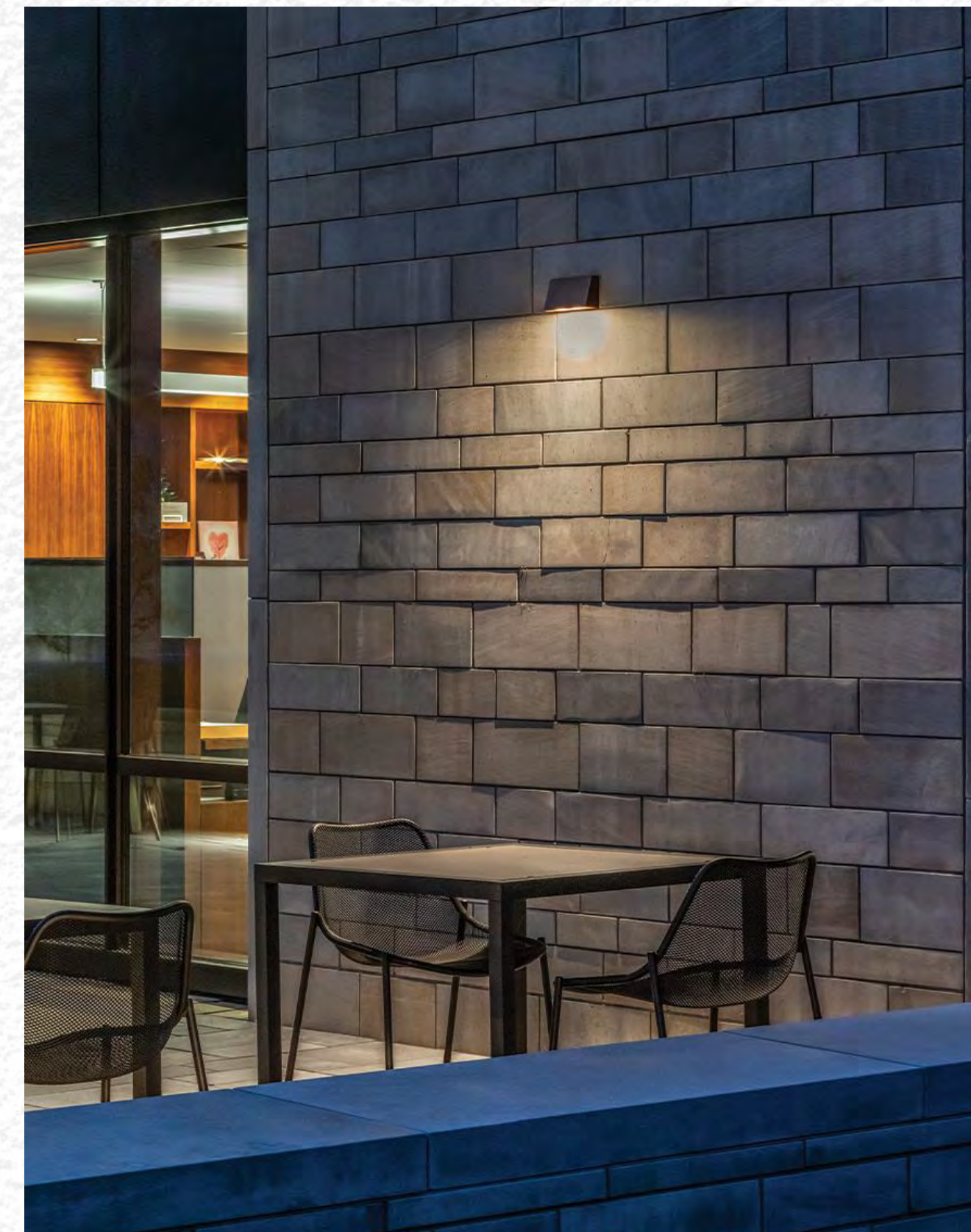
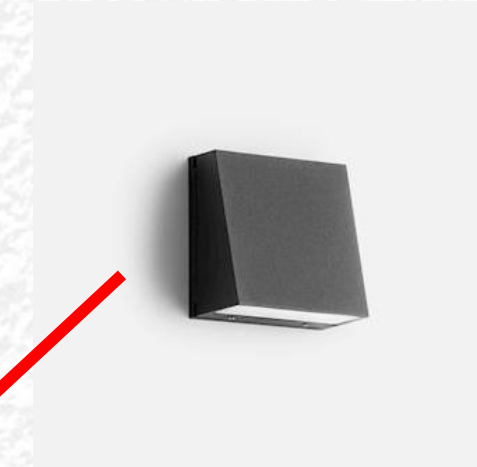
These colors are regularly stocked and have shorter lead times.

BUSH CHERRY™	EASTERN MAHOGANY™	KWILA™	SAVANNAH OAK™	TEAK BROWN™	WESTERN RED CEDAR™
WHITE ASH™	ATLANTIC CEDAR™	BLACKBUTT™	CHESTNUT™	HICKORY™	IROKO™
KNOTTY PINE™	LIGHT OAK™	MAPLE™	ROYAL OAK™	SPOTTED GUM™	TASSIE OAK™

Components

1. Owl
2. Faux books with titles and author names
3. Globe
4. Mug & glasses
5. Clock
6. Black cat
7. Flowering vines
8. Cicero quote

Entry Arbor

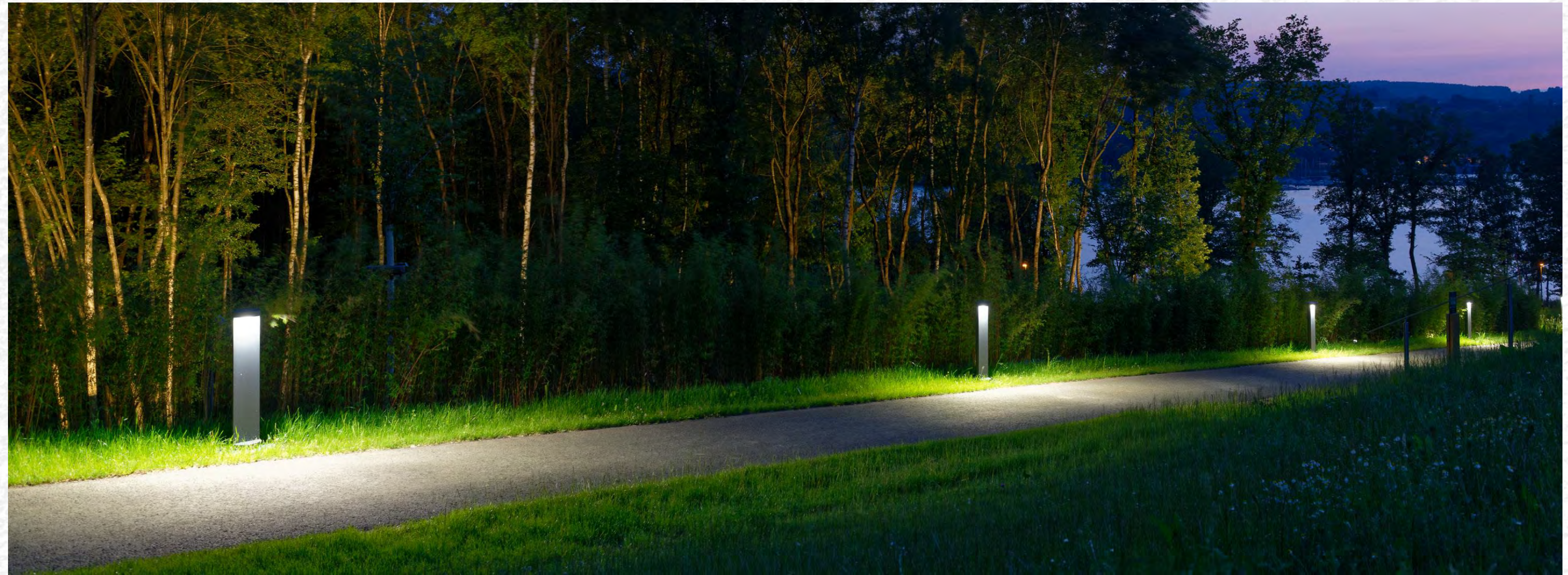


Down Light at Arbor

ADA Compliant Ramp



Stainless Steel Handrail at Ramp



Bollard Lights at Ramp

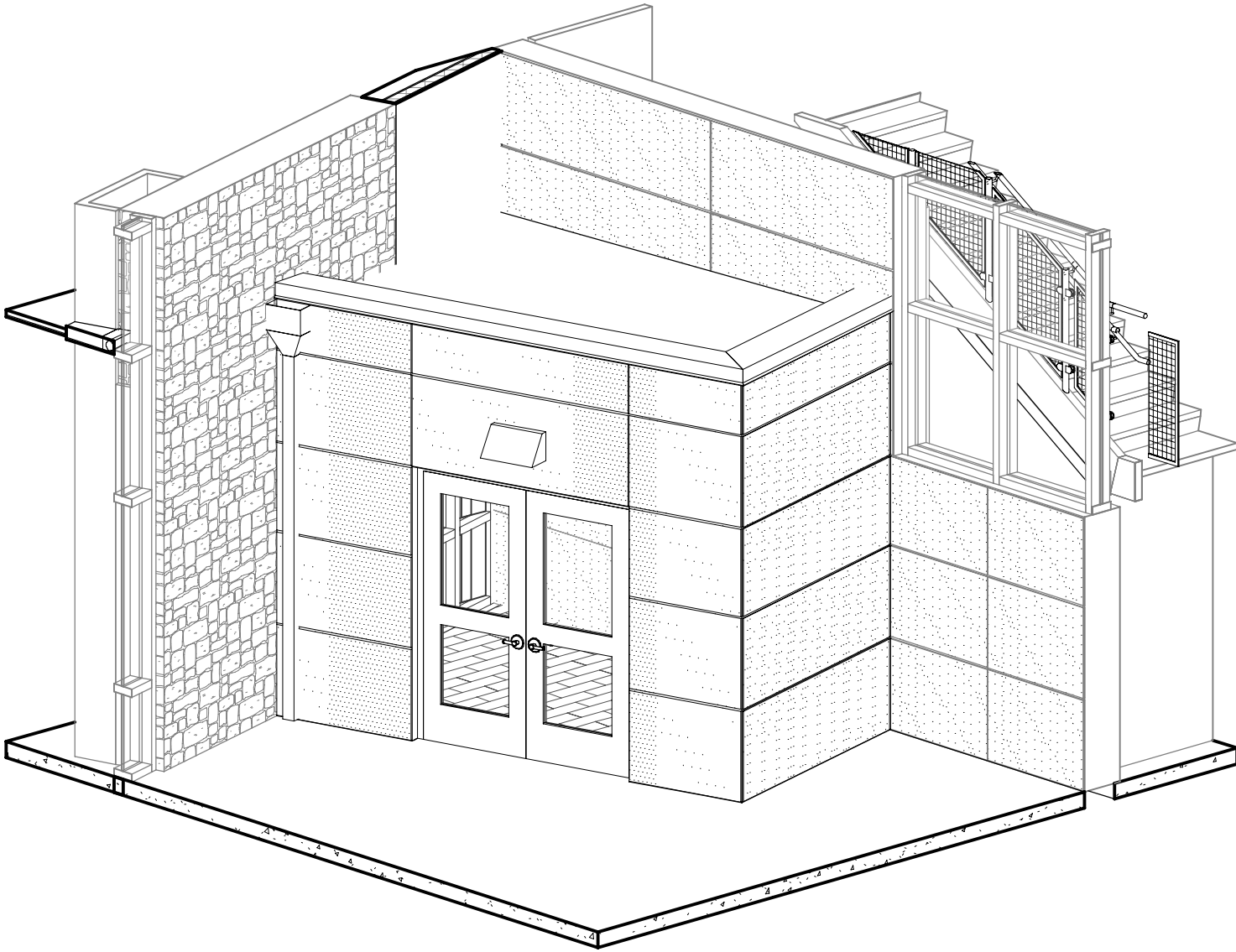


Lake Villa District Library

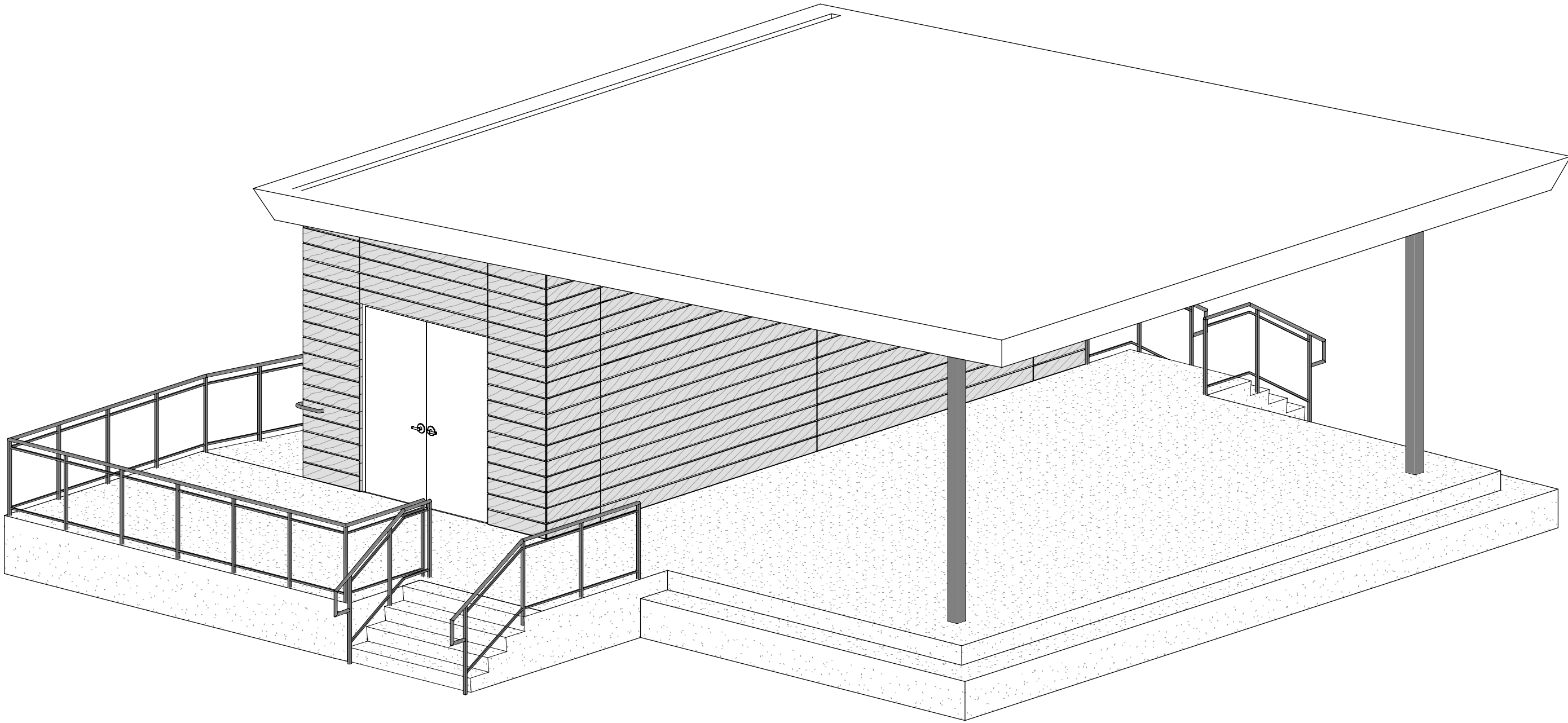
Phase II Improvements

BOARD	
Paul Schreck	PRESIDENT
Nate Gass	VICE PRESIDENT
Vanessa Villarreal	SECRETARY
Jarrod Smith	TREASURER
Jennifer Durot	BOARD MEMBER
Joel Beverley	BOARD MEMBER
David Swan	BOARD MEMBER
Mikael Jacobsen	BOARD MEMBER

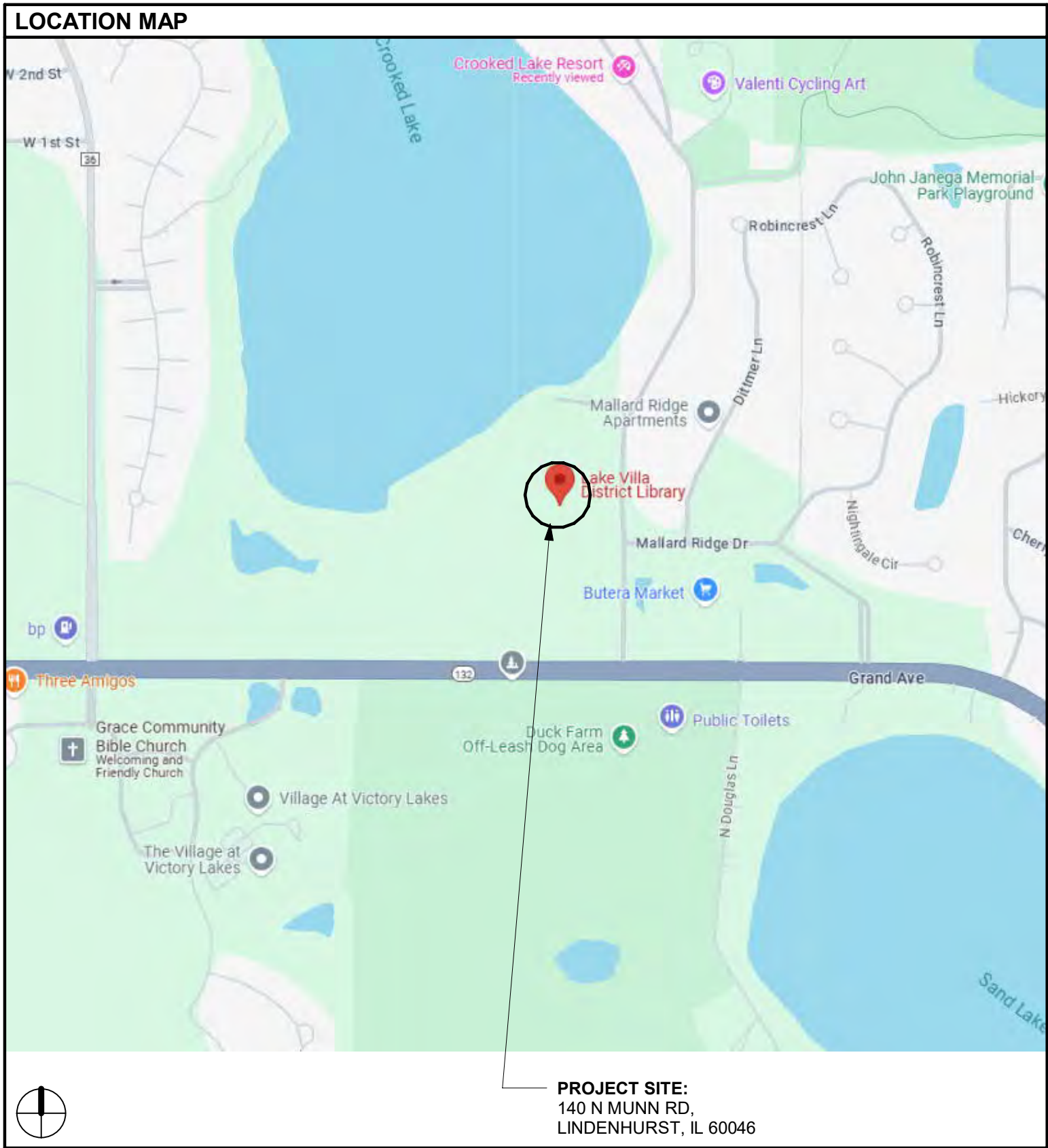
DRAWING INDEX	
SHEET NO.	SHEET NAME
GENERAL	
T1.00	Title Sheet
G0.00	General Notes and Abbreviations
ARCHITECTURAL SITE	
AC0.00	Architectural Site Demolition Plan
AC1.00	Architectural Site Plan
AC1.01	Stage Plan & Elevations
AC1.02	Stage Roof Plan & RCP
AC1.03	Stage Sections & Details
ARCHITECTURAL	
A1.10	Vest. Floor Plan, & Door Schedule
A6.00	Demolition Building Sections
A6.01	Building Sections
A6.10	Section Details



2 Vestibule Axon view



1 Stage Axon View



CERTIFICATION

I HEREBY CERTIFY THAT THESE PLANS AND SPECIFICATIONS WERE PREPARED IN THE OFFICES OF STUDIO GC, INC. UNDER MY DIRECT SUPERVISION AND, TO THE BEST OF MY KNOWLEDGE, COMPLY WITH THE FOLLOWING:

CODE
CODE
CODE
CODE
CODE
CODE
CODE
CODE
CODE
CODE
CODE
CODE

ARCHITECT

LICENSE NO. AND EXPIRATION DATE

DATE SIGNED

22 E. CHICAGO AVENUE
SUITE 200A
NAPERVILLE, IL 60540
T 630.961.1787
HITCHCOCK DESIGN GROUP.COM

PREPARED FOR
LAKE VILLA
DISTRICT
LIBRARY

140 N MUNN ROAD
LINDENHURST, IL 60046

PROJECT
PHASE II
IMPROVEMENTS

140 N MUNN ROAD
LINDENHURST, IL 60046

CONSULTANTS
CIVIL ENGINEER
HEY AND ASSOCIATES, INC.
VOLO, IL 60073
T 847.740.0888

ARCHITECT
STUDIO GC
CHICAGO, IL 60606
T 312.253.3400

STRUCTURAL ENGINEER
ML STRUCTURAL
CHICAGO, IL 60654
T 224.214.1565

ELECTRICAL ENGINEER
20/10 ENGINEERING GROUP
SCHAUMBURG, IL 60173
T 847.882.2010

ISSUE
50% CONSTRUCTION DOCUMENTS
DATE
NOVEMBER 25, 2024

REVISIONS		
NO	DATE	ISSUE

CHECKED BY DRAWN BY

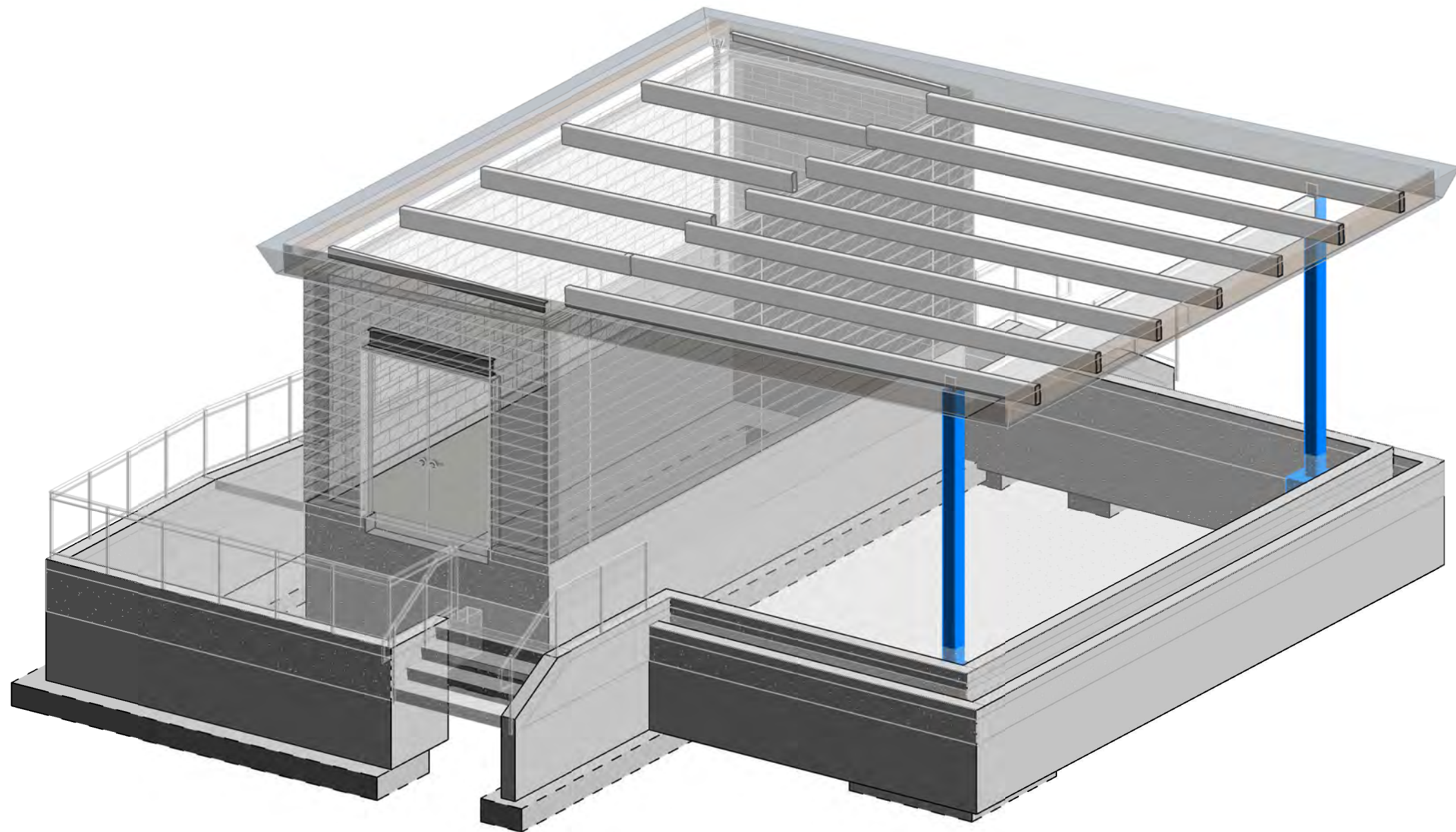
SHEET TITLE
Title Sheet

NORTH SHEET NUMBER

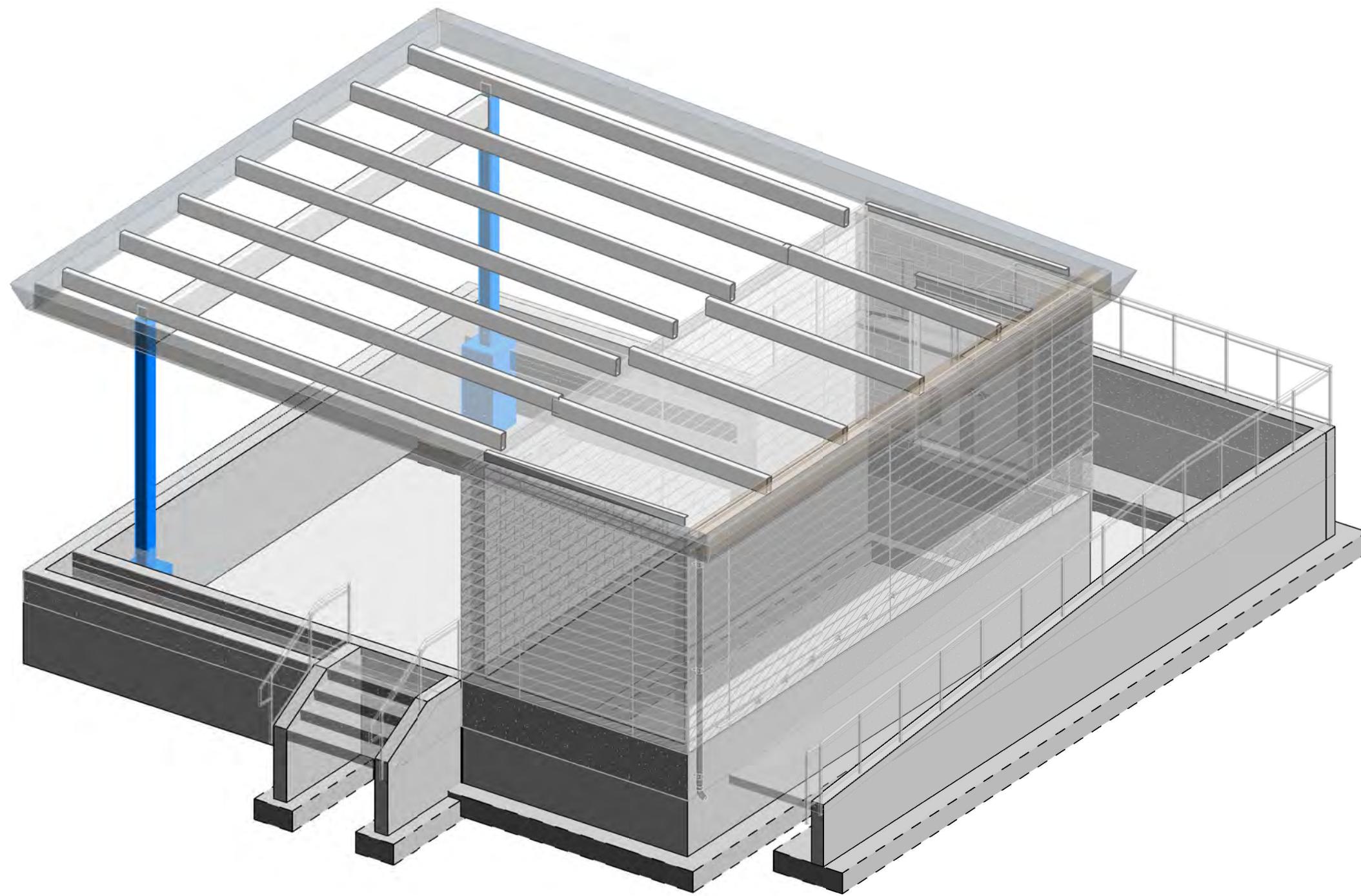
T1.00

© 2024 HITCHCOCK DESIGN GROUP

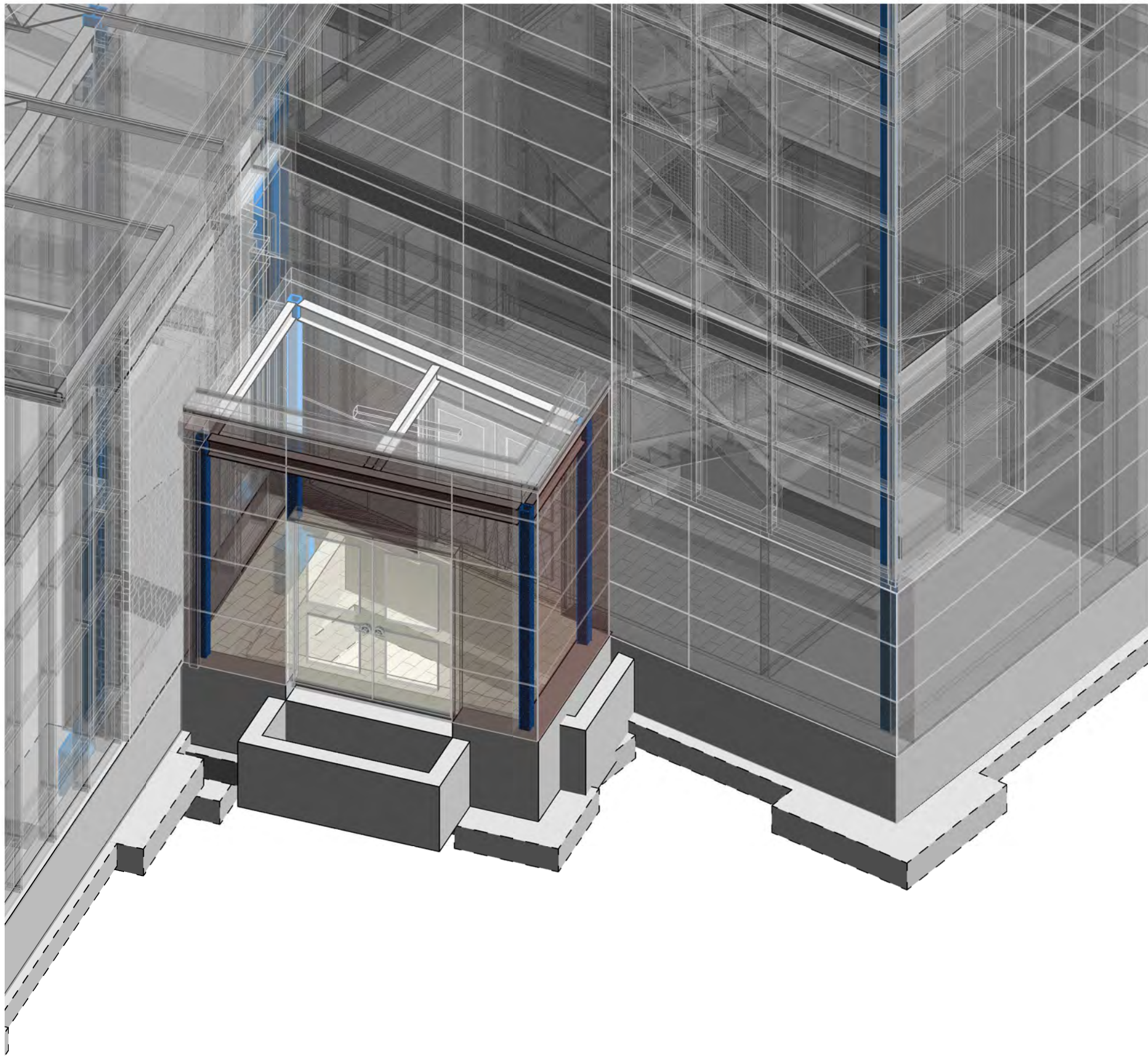
C:\Users\overmyer\Documents\LVDL Outdoor Pavilion and Vestibule_R24_COvermyer.rvt



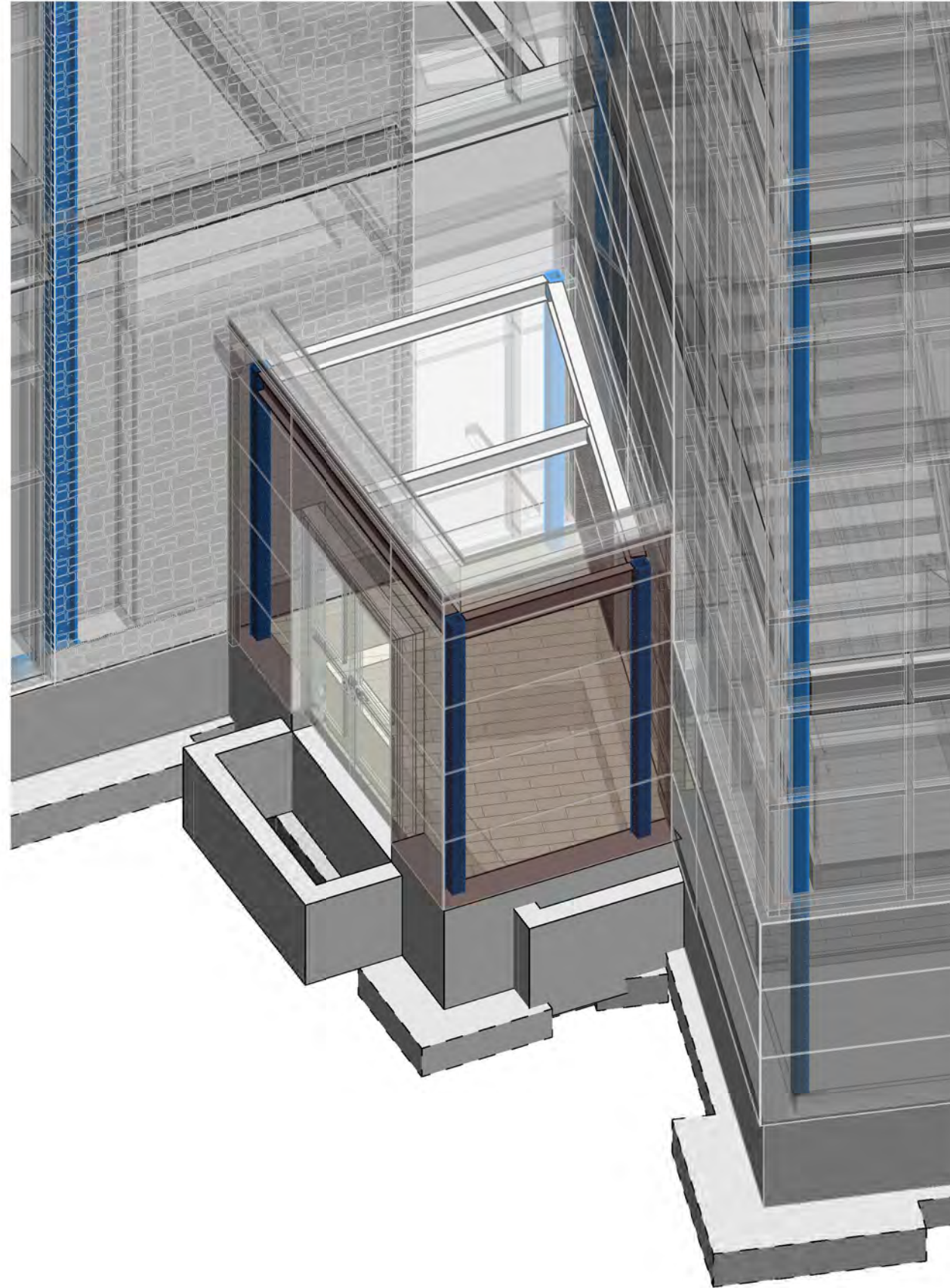
1 3D PAVILION VIEW - LOOKING NORTHWEST



2 3D PAVILION VIEW - LOOKING SOUTHEAST



3 3D VESTIBULE VIEW - LOOKING SOUTHEAST



4 3D VESTIBULE VIEW - LOOKING EAST



22 E. CHICAGO AVENUE
SUITE 200A
NAPERVILLE, IL 60540
T 630.961.1787
HITCHCOCK DESIGN GROUP.COM

PREPARED FOR
**LAKE VILLA
DISTRICT
LIBRARY**

140 N MUNN ROAD
LINDENHURST, IL 60046

PROJECT
**PHASE II
IMPROVEMENTS**

140 N MUNN ROAD
LINDENHURST, IL 60046

CONSULTANTS
CIVIL ENGINEER
HEY AND ASSOCIATES, INC.
VOLO, IL 60073
T 847.740.0888

ARCHITECT
STUDIO GC
CHICAGO, IL 60606
T 312.253.3400

STRUCTURAL ENGINEER
ML STRUCTURAL
CHICAGO, IL 60654
T 224.214.1565

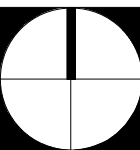
ELECTRICAL ENGINEER
20/10 ENGINEERING GROUP
SCHAUMBURG, IL 60173
T 847.882.2010

ISSUE
50% CONSTRUCTION DOCUMENTS
DATE
NOVEMBER 25, 2024

REVISIONS		
NO	DATE	ISSUE

CHECKED BY DRAWN BY

SHEET TITLE
3D VIEW

NORTH
 SHEET NUMBER
S6.0

© 2024 HITCHCOCK DESIGN GROUP

NOTE:
1. 3D IMAGE IS PROVIDED FOR INFORMATION ONLY AND MUST NOT BE
SOLELY RELIED UPON TO CONDUCT THE WORK. REFER TO THE
STRUCTURAL DRAWINGS FOR DETAILED DESCRIPTION OF SPECIFIC WORK
TO BE PERFORMED.